

# Nature Discovery

## Program time is 9:00am to 12:00noon

Welcome to Nature Discovery!! Please review this important information which will help make this program more enjoyable & safe for your child. Please take a moment to read through the material and review with your child. If you have any questions or concerns, do not hesitate to contact us at the Recreation Office at 508-366-3066.

**Daily Information:** Children should bring a lunch and drink each day, as well as a water bottle to take on the hikes. Many children attending our program have nut allergies so we ask that you not send foods that may contain nuts. Please note that we do not have access to refrigeration. Put name on lunch bags/box and use unbreakable containers for drinks. Wear suitable shoes for walking/hiking. Sandals are NOT suitable. Don't forget to apply sunscreen. When approaching the Conservation Area in your car, please use caution. Bowman Street is a small, winding road. The parking area is small and some cars will be parked along the road. You may leave right after dropping your child off with our counselors. This may alleviate some of the traffic in and around the parking lot. We ask that you have your child to the program 5-10 minutes early, but not much more before. Counselors will wait the first morning, but after that if you arrive late, parents will have to find the counselors at the shelter. Also, please pick children up on time. Most counselors have second jobs to get to.

## Program Rules:

Please take a moment to review these rules and discuss them, in your own words, with your children. Make sure they understand the meaning of each one.

- Do not throw rocks in the parking lot area or along trails.
- No running in the parking lot. Look out for cars!
- Do not share lunch with others.
- Stay away from poison ivy. If you're not sure what it looks like, ask counselors.
- No pushing, chasing, intimidating, fighting or bullying will be tolerated.
- Bad language will not be tolerated.
- Bad behavior of any kind will not be tolerated. Any one not cooperating with counselors or rules will be given a warning. Should a serious problem arise, children will not be allowed back in the program.
- REPORT ANY AND ALL PROBLEMS TO YOUR COUNSELOR. Don't be afraid to tell them if you do not like something or if something/someone is bothering you.

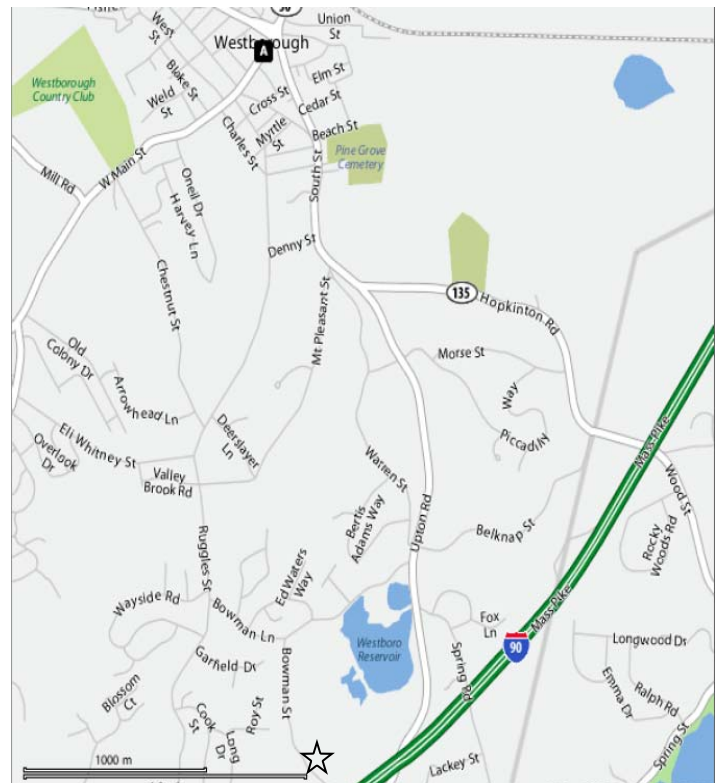
## Rain Policy:

Notification of program cancellation due to inclement weather, will be posted on our website, [www.town.westborough.ma.us](http://www.town.westborough.ma.us). Click on Town departments, then Recreation. If you do not have access to a computer, feel free to call us at 508-366-3066.



Typically, common sense is the best guideline. If there is a heavy rain, steady drizzle, thunder or lightning, the program is cancelled. If these events start after the program has begun that day, children will be moved to the outside shelter which is 50 yds up the main trail from the parking lot. If it continues, parents will be expected to pick up their children.

**Directions & Map:** The Bowman Street Conservation Area is accessible either by Upton Road to Bowman Street OR Ruggles Street to Bowman Lane to Bowman Street. Please note: Bowman Street is a small, winding road. Drive slowly and cautiously.



## Allergies & Medical Information:

Please notify Head Instructor if your child is allergic to bee stings or has any other medical problem. If your child has an epipen and you would like our staff to administer it in emergency situations, you must sign our "Epipen Consent Form" available in our office. The form requires your signature and the prescribing physician. As well, your child may self-administer if you choose. In either case, we will immediately call emergency personnel at the Westboro Fire Dept.

